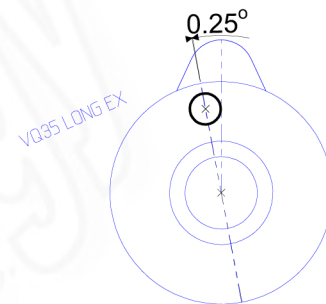
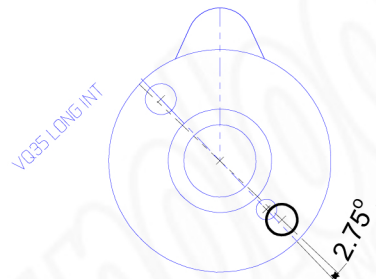
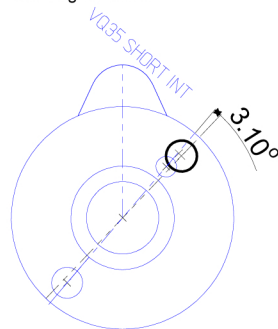
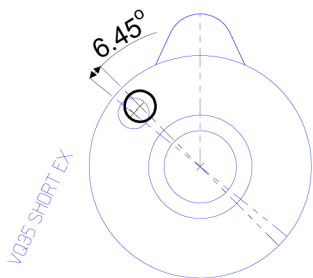


Using the VQ35 hole, cam will be advanced  
12.9 crk deg in a VQ30

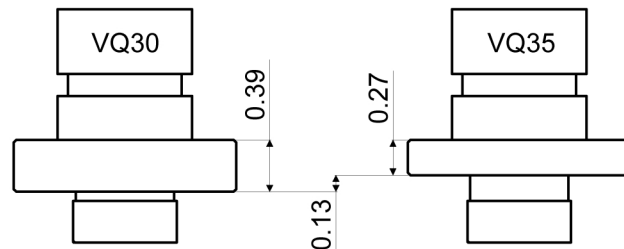
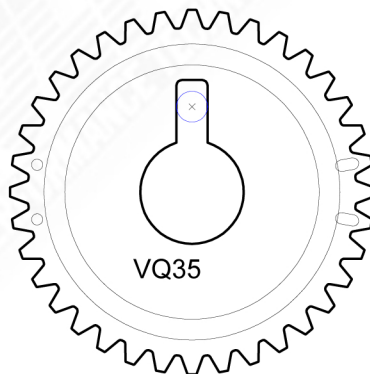
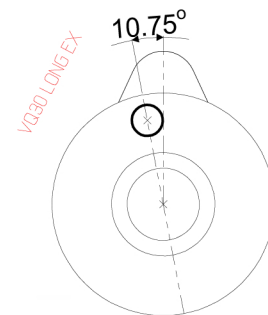
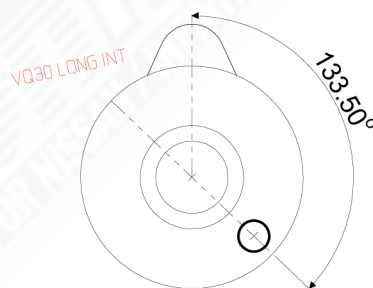
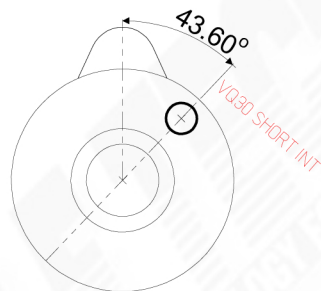
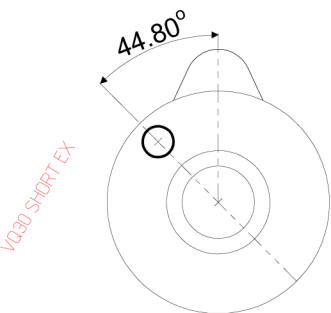
Using the 6mm VQ35 hole, the cam  
will be advanced 6.2 crk degrees.  
(You must remark timing gear mark  
180 deg from original mark)  
from original mark.

Using the 6mm VQ35 hole, the cam  
will be retarded 5.5 crk degrees.  
(You must remark timing gear mark  
180 deg from original mark)  
from original mark.

Using the VQ35 hole, the cam  
will be retarded .5 crk degrees.



WORKSHEET FOR CAM TIMING ERROR IF VQ35DE CAMS AND HEADS ARE USED  
ON A VQ30DE ENGINE. USE THIS AS A STARTING POINT AND ADJUST PER YOUR ENGINES STACKUP.



VQ35DE cams are set back 3.2mm  
requiring a 3.2mm spacer to align  
chains