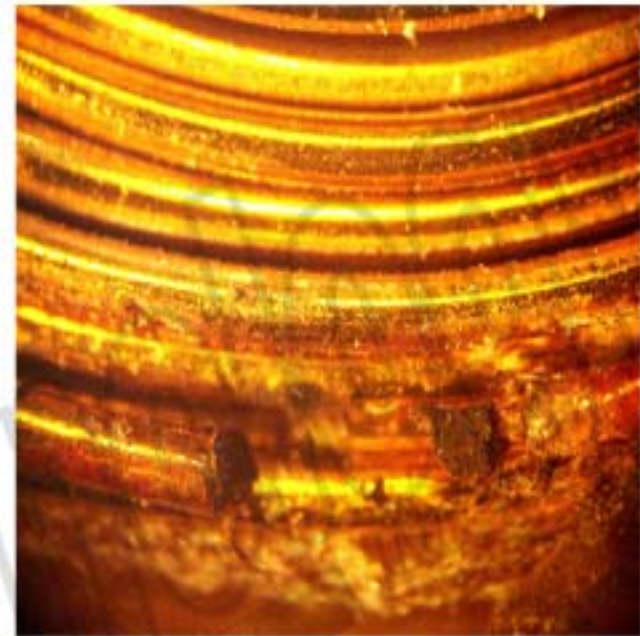
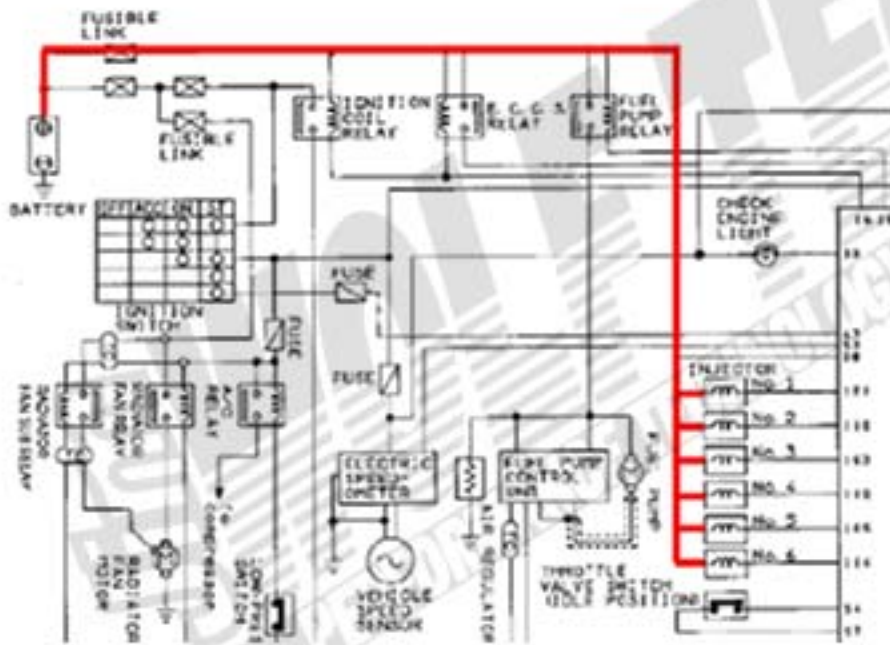


Failure mode of early style gallery injectors used in 90-94 Nissan 300ZX vehicles

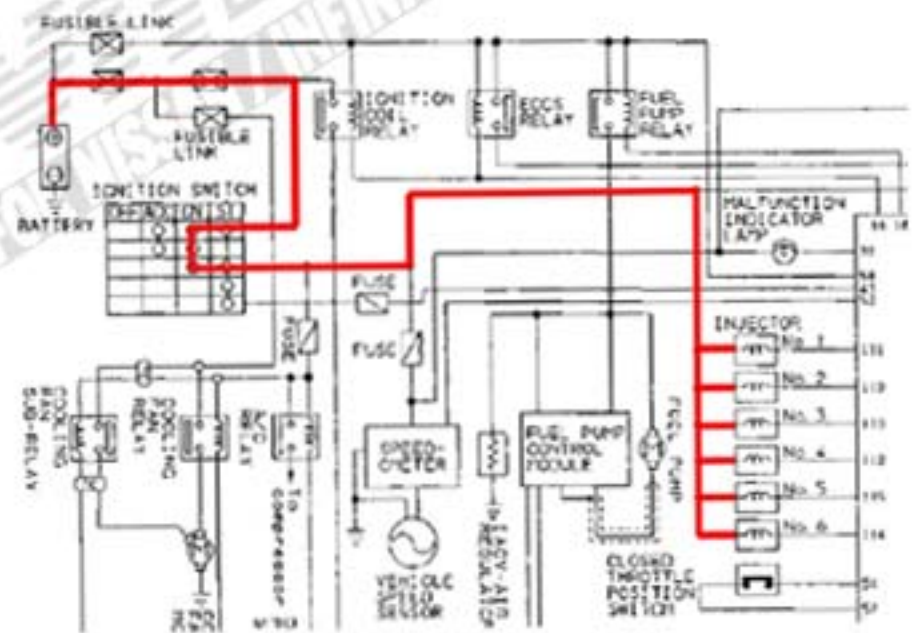
The failure mode is as shown at right, where the injector coil wire appears to oxidize and either short out the coil or open the circuit resulting in either a low impedance or an infinitely high impedance. Two issues appear to contribute to the failure: wire coating deteriorates in the presence of oxidizing additives in the fuel, and the use of a constant 12V+ circuit which was also changed with the change to the late style injector. No similar issue exists on the later vehicles. Late model injectors, rails and connectors can be retro-fitted with machining to the lower manifolds.



EARLY STYLE INJECTOR COIL DAMAGE



NISSAN 90 TO 94 Z32 12V+ ALWAYS PRESENT AT INJECTOR COILS



NISSAN 95+ Z32 12V+ SWITCHED AT IGN SWITCH, 12V+ ON ONLY WHEN KEY IS ON.