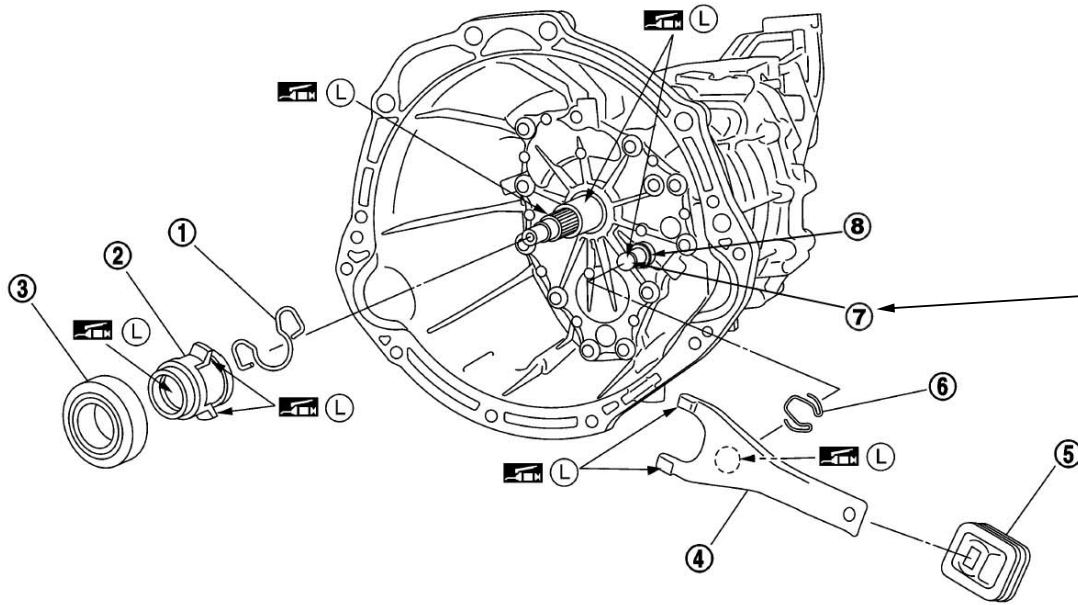
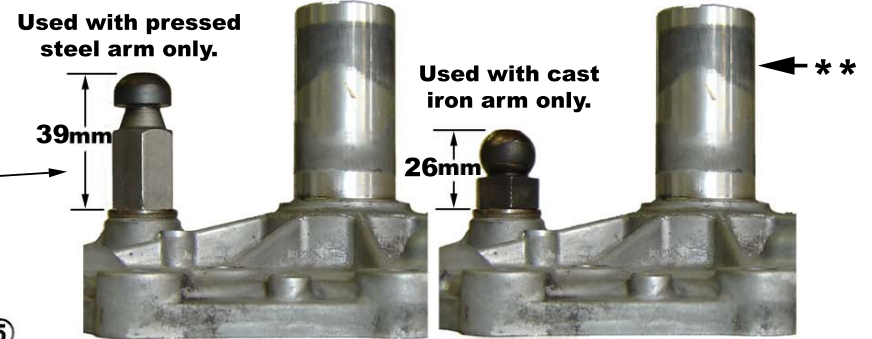


# 350Z & G35 EARLY AND LATE STYLE RELEASE LEVER-ARMS AND PART NUMBERS FOR THEIR ASSOCIATED PARTS

350Z AND G35 CLUTCH RELEASE ARM PARTS MUST NOT BE MIXED. CONFIRM THAT THE CORRECT PARTS ARE BEING USED IF REPLACEMENT PARTS ARE INSTALLED DURING CLUTCH INSTALLATION. CLEAN AND RE-LUBE ALL PARTS MARKED "L" BELOW WITH A LITHIUM-BASED GREASE CONTAINING MOLYBDENUM DISULPHIDE.



**CAUTION:**  
 Use 39mm Pin-ball with pressed steel (early) arm only.  
 Use 26mm Pin-ball with cast iron (late) arm only.  
 Mixing these parts will result in clutch not operating correctly or damage.



\*\* Replace cover assembly if visible wear is apparent or clutch will be hard to release.

PIC. #	350Z / G35(V35) CLUTCH RELEASE ARM PARTS	PART # FOR PRESSED STEEL TYPE LEVER ARM SYS. 350Z 6/02-6/03 G35 8/02-8/03	PART # FOR CAST IRON TYPE LEVER SYS. 350Z 7/03-10/06 G35 (V35) 9/03-5/07
1	SPRING-HOLDER,CLUTCH RELEASE BEARING	30514-14600	30514-CD000
2	SLEEVE-CLUTCH RELEASE	30501-S0284	30501-S0284
3	BEARING-CLUTCH RELEASE	30502-69F10	30502-69F10
4	LEVER-WITHDRAWAL,CLUTCH	30531-01S60 (pressed steel)	30531-CD000 (cast iron)
5	COVER-DUST,WITHDRAWAL LEVER	30542-69F00	30542-CD000
6	SPRING-RETAINER,WITHDRAWAL LEVER	30534-66300	30534-66300
7	PIN-BALL,WITHDRAWAL LEVER	30537-40P01 (39mm)	30537-CD000 (26mm)
8	WASHER-BALL PIN (3mm thick)	11058-H1001	11058-H1001
9	COVER ASSY-FRONT	32110-CD000	32110-CD000